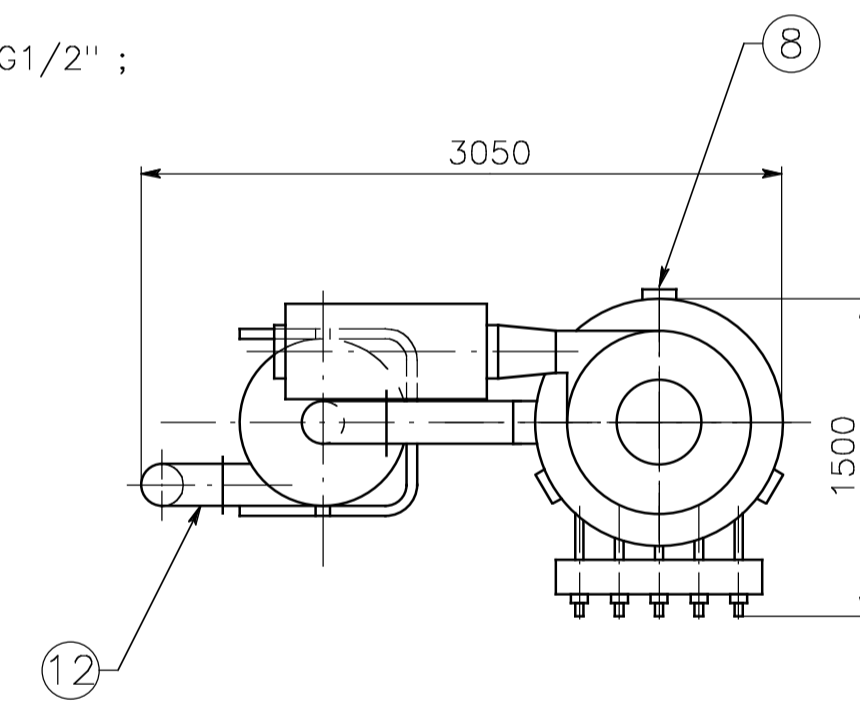
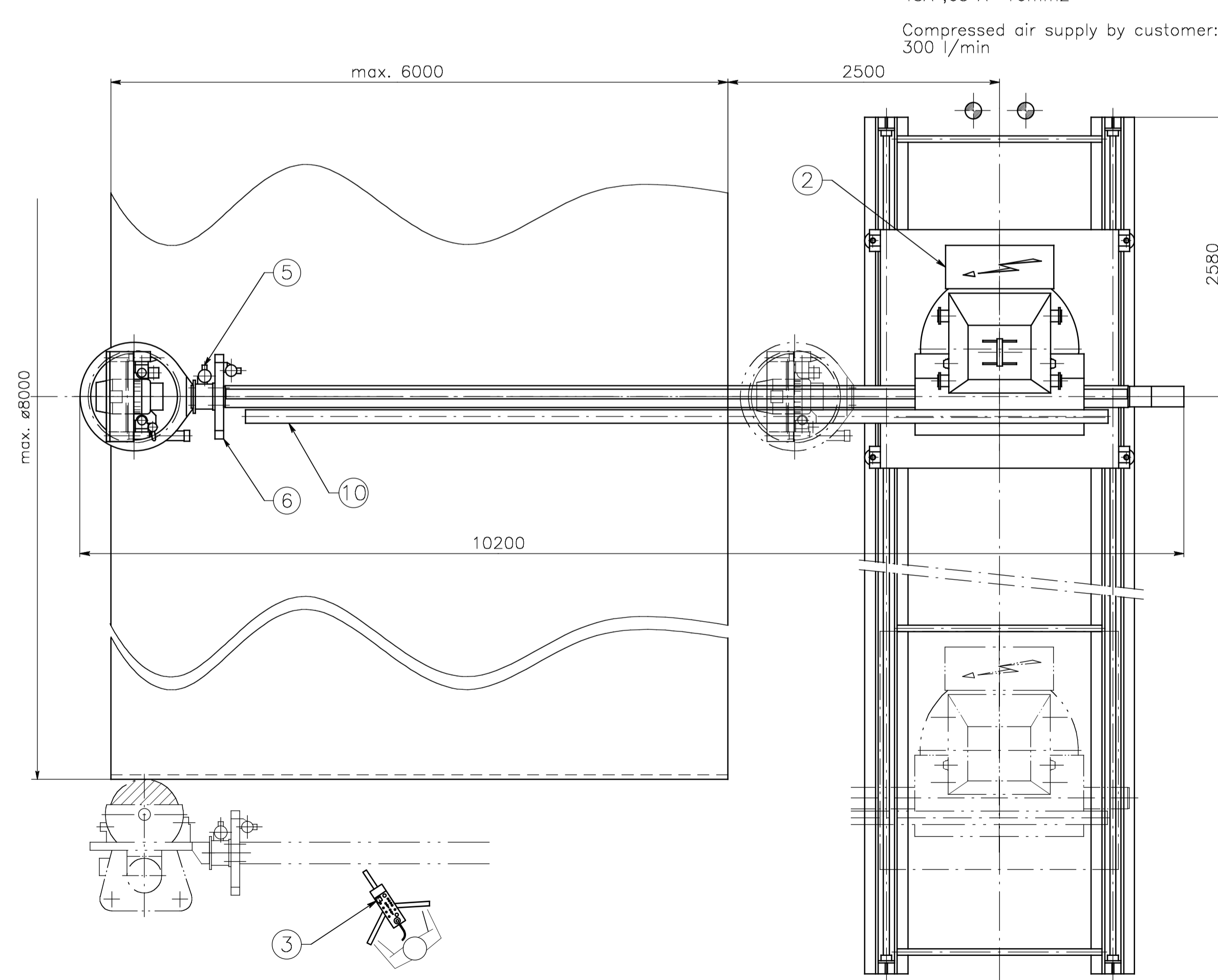


Electric supply by customer: 3x400V +N +PE / 60 Hz; 22 kW; 45A ;6,3 A 16mm²

Compressed air supply by customer: 6 bar; Connection G1/2" ; 300 l/min



Electric supply for dust extractor by customer: 3x400 V; 60 Hz; 20A 25A

Compressed air supply for dust extractor by customer: 6 bar ; Connection G1/2" ; 50l/min

- ① Basic machine type BSA 5300/600
- ② Switch cabinet
- ③ Control panel
- ④ Grinding head type KS-1200
- ⑤ Turning device
- ⑥ Cross slide control type W-250
- ⑦ Grinding head type MS-1450
- ⑧ Support
- ⑨ Carriage
- ⑩ Suction pipe and tubes for dust extraction
- ⑪ Dust extractor type STA-2500-S
- ⑫ Pre-separator

All black marked parts supplied by FARROS GRINDING SYSTEMS

All red marked parts to be provided by customer

All blue marked parts components to be machined

| | | | | |
|---------------------------------------|------------------|------------------|----------|----|
| Grinding Installation BSA 5300/600 | Maßstab Scale | Gez. Drawn | 13.09.07 | KS |
| | 1:30 | Gepr. Appr. | | |
| Datum Date | | Visum By | | |
| FARROS Grinding Systems | | 2007040-00-000/1 | | |